

CAST IRON OVER STEEL

ALDERLEA T4

ALDERLEA T4 CLASSIC

FREESTANDING STOVE

FOR SMALL TO MEDIUM SPACES

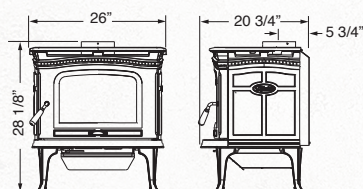
Heat Output Cord Wood

56,000 BTU

26,300 BTU EPA Test Fuel

EFFICIENCY (LHV)	74%
EMISSIONS	2.9 GM/HR.
LOG SIZE (MAX)	16-18 INCHES
FIREBOX SIZE	1.4 CU.FT.
GLASS SIZE	118 SQ.IN.
WEIGHT	430 LB.

Alderlea woodstoves redefined the traditional cast iron stove by wrapping a graceful cast iron profile around a high-performance steel firebox, a combination that produces radiant and convection heat, in an efficient, long-burning package. The T4, and the T4 Classic in porcelain enamel, incorporates a huge glass window for a clean view of the flame, warming shelves that swing out to reveal a concealed cook top, efficient heat output and unmatched ease of use. It's a powerful, reliable source of heat with old world charm and unmatched durability.



ALDERLEA T4



ALDERLEA T4 CLASSIC

STANDARD FEATURES

Reliable, Durable Non-Catalytic Technology
Floating Firebox for extended stove life
Multi-Port Combustion Air Injection System
Airwash Technology for clear, clean glass
Swing out food warming shelves
Easy cleaning ash system and chute
Inside and outside combustion air capable
Concealed cooktop fits 6" x 13" pan
Fits close wall clearances without heat shields
Steel Baffle and 304 Stainless Steel
Insulation cover
Mobile Home approved
East-West loading

PERFORMANCE OPTIONS

Variable-Speed Blower

DESIGN OPTIONS

T4: Metallic black cast iron finish
T4 Classic: Majolica, Ebony and
Antique White porcelain enamel finish

Decorative door inset available for
porcelain enamel models



 **CAST IRON OVER STEEL**

 **AIR WASH**
A SYSTEM BY PACIFIC ENERGY

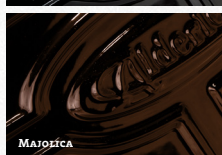
 **BAFFLE SYSTEM**

 **FLOATING FIREBOX**

 **KNIFE EDGE DOOR**

 **SELF SEALING ASH DUMP**

 **SINGLE LEVER**
AIR CONTROL



For reference only. Installations should be based on installation manuals. Specifications subject to change.